



Strength.  
Power.  
Grace.



شركة عبد الله المدني للتجارة  
Abdulla Al Madani Trading Co.

Your Strategic Partner



# Chairman's Message

"As an independent company, we're dedicating our people, technology, financial resources & manufacturing expertise to add value to our customers. We want to build a diversified business that provides exceptional service and superior value to our stakeholders, by becoming a leading Trading Company in every market we serve."

Late P.D Patel  
Founder

## About Abdulla Al Madani Trading Co.

Abdulla Al Madani Trading Co. is a company established in 1991 by the Patel family, in Abu Dhabi. When the idea of establishing a trading company in U.A.E. was conceived, Dubai was but a small trading port, albeit boasting the largest souk on the coast. It was the vision conceptualized by Mr. P.D. Patel then, which has brought AAMTC to high levels of growth and sustainability.

The Company pioneered trading of products required for Electrical Power Projects, Transmission Lines and Agriculture in this region. The varied range of products sourced and supplied by AAMTC, over the years, has resulted in an impressive global network of suppliers in the industry thus allowing customers a single window agency for procuring products related to the Electrical Power generation, transmission and distribution industry.

AAMTC has an impeccable track record of supplying products and rendering valuable service by executing several reputed and valuable Government tenders in U.A.E., Middle East and Africa. Headquartered in Dubai, this Company has sales offices in Oman, Abu Dhabi and Sharjah, employing personnel who are experts in their fields. It is the emphasis on providing quality service and product that has facilitated an expeditious growth for AAMTC, over the years.

## Our Vision

In order to fulfill our mission, we:

- » Deliver excellence in every aspect of our business.
- » Understand the needs of our customers and match that need with the right product from the right supplier at the right time – every time.
- » Strive to build long-term relationships with customers and suppliers based on mutual trust and respect.
- » Are a reliable source of timely information that is useful to our customers and suppliers.

In addition to standard supplies of products in the electrical industry, AAMTC boasts of dealing with the following world renowned brands:

- » Power Transformers, from Emirates Transformer & Switchgear Ltd.
- » Distribution Transformers, from Emirates Transformer & Switchgear Ltd.
- » Medium Voltage Switchgear from Lucy switchgear, Tamco, Ulusoy and Hawker Siddeley
- » Cables from TF Kable, Ducab and Power Plus
- » Cable Welding and Butt Welding machinery from Microweld
- » Copperon- Structured and Data Cabling

In its ambition to represent the best in its industry, there is much scope for growth and the management at AAMTC will continue to endeavour to represent, in this region, the top brands that this industry flaunts. In the words of its Managing Director, Mr. Rohit Patel, "Over the past 30 plus years, we have grown with the vision of providing valuable service and quality products to our esteemed clients. We will continue to explore new territory, new products and latest technologies but our focus on quality and service will remain as our number one priority.

## Our Mission

Our mission is to ensure profitable growth by adding value through superior service, knowledge and commitment and observing highest ethical and professional standards in all business dealings and treatment of our employees.





شركة عبد الله المدني للتجارة  
Abdulla Al Madani Trading Co.



الإمارات للمحولات و المفاتيح الكهربائيّة المحدودة  
Emirates Transformer & Switchgear Limited

## Power Transformers



Plan is underway for 100MVA, 220kV voltage class.  
Power transformers from 2500kVA up to 40MVA, 72.5kV &  
including 31.5MVA 66kV Conventional mineral oil cooled.

AAMTC offers a complete range of power transformers designed to grant the reliability, durability and efficiency required in utility, industrial and commercial applications. ETS is a major transformer manufacturer in the GCC and the world. They offer both liquid and dry type transformers as well. Transformers are provided in accordance with the most demanding industry and international standards. Transformers can be used for indoor or outdoor applications. Our portfolio of transformers allows utilities and industries to maximize their return on transformer assets by ensuring high reliability, reducing life cycle and optimized performance.

Since our establishment, we have grown steadily over the years, gaining experience by being agents of Distribution Transformers at first and thereafter, moving in slightly higher rating Power Transformers. We provide a wide range of power transformers ranging from 5 mVA – 40 mVA. Over the years we have become a trusted provider and our services are rendered to various successful projects.

ETS does not compromise on quality. We ensure that every transformer delivered has undergone rigorous full acceptance testing. Our range of products is the result of our own extensive research, development, analysis, testing and manufacturing which makes us unique in the industry.





### Annual Maintenance Contracts

Generally, the scope of our Maintenance Contracts includes visual inspection, checking for leakages, various tests on oil, tightening of all joints, checking of cable terminations/connections, general cleaning and touch-up painting wherever required to pass and certify the unit. In order to ensure that our customers do not face sudden difficulties, this is a service we recommend our customers definitely should consider investing in.

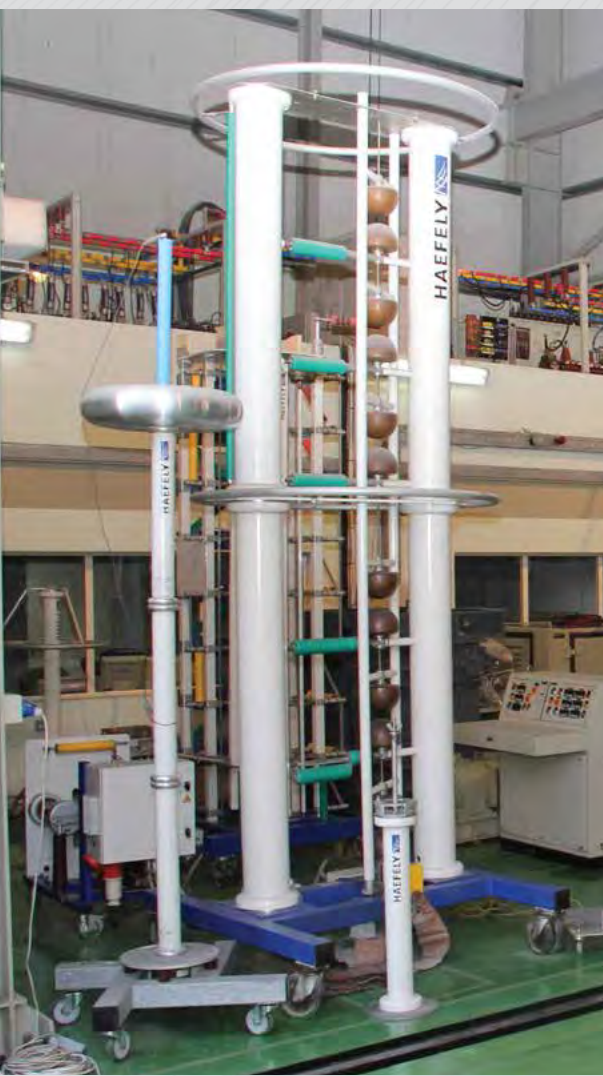
### Supply of Spare Parts

While we always recommended that the end-users maintain a minimum stock of spare parts for transformers, we do understand that sometimes there is a need for parts that cannot be fulfilled by internal stocks. With our global supplier network and considering that we also maintain some inventories of standard parts at our warehouse, we are better equipped to supply required spare parts as needed.

### Testing Service

Equipped with a state-of-art facility for testing, we are able to offer users of transformers and substations proper testing facilities for all routine and most type tests as per IEC60076. We also can carry out some special tests. Our goal is to provide customers with the best possible service and support, every time. It goes without saying that customers can rely on us for optimum economic benefits throughout the entire life cycle of transformers and related equipment. Around the region many customers rely on ETS' service division for these services. Our large and highly skilled team of field service engineers are equipped with the latest tools and are aware of the procedures to ensure that the problems are quickly diagnosed and resolved to our customers' satisfaction.

To provide the highest level of confidence possible, our engineers are backed by a 24 hour x 365 day support from the organization which is always ready to provide any expertise needed to solve even the most complex problems. Investing in a modern testing facility which may be considered at par with some of the global giants in the industry, is just one step towards ensuring the highest standards of service and quality of product, in this region. At ETS, we understand and recognize the value of efficient and quality service deserved to be provided to you!



Abdulla Al Madani Trading Co.  
P.O. Box: 2019, Abu Dhabi , UAE  
Tel: +971 2 6332285  
Fax: +971 2 6345880  
e-mail: aamtc@eim.ae



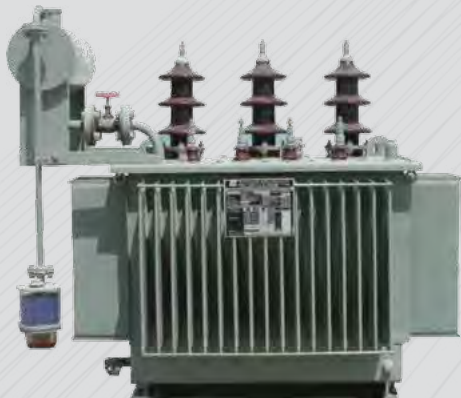


شركة عبد الله المدني للتجارة  
Abdulla Al Madani Trading Co.



الإمارات للمحولات و المفاتيح الكهربائيّة المحدودة  
Emirates Transformer & Switchgear Limited

## Distribution Transformers



### Transformers

- » Distribution Transformer from 50kVA to 3200kVA up to 36kV, voltage class conventional mineral oil cooled
- » Dual Ratio Transformers
- » Earthing Transformers
- » Rectifier Transformers
- » Windmill Transformers
- » Transformer for variable Speed Drive 6,12,18 or 24 pulse
- » Electrical submersed pump with Multi-tap transformers
- » Auto Transformers with voltage up to 36kV
- » Phase Shift and Multi-tapped Transformers for ESP application for oil & gas
- » Completely Self-Protected Transformers
- » Transformer for Furnace Application
- » Reactors

We provide a wide range of transformers up to voltage classes of 33kV. While we cater exactly to our customer requirements, generally transformers produced here fall within two categories:

#### » For pole mounted transformers

- HV/LV outdoor bushing on top cover
- HV outdoor bushing on top cover and LV cable box on the side
- Hermetically sealed or of breathing type with conservator
- Single or dual primary

#### » For ground mounted transformers

- HV/LV cable boxes on the side
- Hermetically sealed or of breathing type with conservator





## Transformer Refurbishment

During the life cycle of the transformers, the winding and other insulation absorbs moisture from the transformer oil causing deterioration of its insulation properties, which invariably can lead to premature winding failures. Due to oxidation of transformer oil - the carbon and sludge gets deposited in the winding ducts, thus causing ineffective cooling and creating local hotspots. The accepted industrial practice recommends that once in every 15 years, the winding be taken out for cleaning and drying so that probability of failure is minimized.

## Supervision Of Erection & Commissioning Of Transformers & Substations

The success of any supply is in its satisfactory installation and commissioning. Therefore, ensuring that a transformer or substation unit is installed properly becomes of prime importance to all our customers. Having the inherent knowledge, we also provide our customers with the services of performing pre-commissioning checks & tests as well as the general supervision of the erection and commissioning of transformers and substation units up to 125MVA, 132kV class, again irrespective of its makes.

## On-site And Off site Technical Support

If you have a problem, we have the solutions. Having accumulated skills of over 100 years spread amongst our Design & Production teams, we flaunt the requisite problem-solving abilities in almost any area related to transformers. This can even include recommending desired protection systems or providing our customers with the necessary inputs for installation or for designing transformers for special applications like Motor starting, Furnace, Variable speed drive, etc.

## Powering The Industry With Innovative Technology

### Repairs

Irrespective of the make of the Transformers, i.e. irrespective of whether it is the repair of transformers, switchgears or substations manufactured by us or manufactured by another company, we possess the required skills and are equipped with the required facilities to conduct repairs. Depending on the nature of repair, it can be done at the site of the customer or at our warehouse in Jebel Ali, Dubai. The recent years have witnessed an increasing trend in executing repair orders for transformer units supplied by other manufacturers, thus allowing us to enhance the quality of our service in this area.

### Maintenance

Effective and efficient maintenance services form the foundation of a good service and support strategy. A strict maintenance service for the transformers increase the longevity of the same. Recognizing this fact, we at ETS offer our services for refurbishing and maintenance of transformers with ratings up to 250MVA, 220KV class, irrespective of its makes.

### Transformer Oil Maintenance

Even though transformers are supposed to provide long and trouble free service, it is recommended that it be given reasonable amount of attention in terms of maintenance. Maintenance consists of regular inspection, periodic monitoring of the characteristic of insulating oil and reconditioning, if necessary. The maintenance of transformer revolves around ensuring the quality of oil, monitoring the moisture content, to reduce oxidation and aging due to overloading and exposure to winding heat and exposure to the atmosphere, which causes deterioration in the properties of the transformer oil and insulation. Transformer oil needs to be tested regularly to ensure the basic properties are checked. This is done by conducting various tests, such as BDV, Moisture, Acidity, Resistivity, DGA, Furan, etc. If the test results of oil are not acceptable, the oil needs to undergo filtration under heat and vacuum, thereby degassing of oil as well. Having invested in three mobile units, with different filtration capacities, we are able to provide this valued service of filtering, drying or replacing the oil in transformers, at sites.



Abdulla Al Madani Trading Co.  
P.O. Box: 2019, Abu Dhabi, UAE  
Tel: +971 2 6332285  
Fax: +971 2 6345880  
e-mail: aamtc@eim.ae





شركة عبد الله المدني للتجارة  
Abdulla Al Madani Trading Co.



الإمارات للمحولات و المفاتيح الكهربائية المحدودة  
Emirates Transformer & Switchgear Limited

## Package Substations



Over the years we have developed a reputation in the market for being quality dealers. We provide a wide range of package substations which primarily comprises of the Transformer, high voltage Ring Main Unit and low voltage Feeder Pillar. Depending on customers' requirements, we can provide Ring Main Unit and Feeder Pillar on opposite sides or on one side of the transformer. Furthermore, if required by the customer we can also supply appropriate housing for the substation unit. The substations are completely weather proof and are suitable for indoor or outdoor use.

### The package substations come in the following combinations

- » Transformers with LV distribution board
- » Transformers with HV ring-main unit (S F6 / Oil Type)
- » Transformers with LV distribution boards and HV ring-main units (S F6/Oil Type)
- » On special requests, the HV side can also include a metering unit if required
- » As an option, a disconnecting chamber can be offered for easy access

### Standard ratings of the transformers

500, 1000, 1500 KVA. Other ratings and combinations are available on request. The package substations can be supplied with or without housing. These package units result in substantial reductions in initial costs, space requirements and eliminate certain potential sources of problems.

### Product specifications

System Voltage	Up to 17kV
Transformer Rating	To be specified by the customer (From 250kVA to 1600 kVA)
LV Feeder Pillar	To be specified by the customer
HV Ring Main Unit	Oil Type / SF6 with Fuses / SF6 with Circuit Breaker
Type of Cooling	ONAN
Housing	GRP / ALUZINC / SHEET STEEL / ALUMINIUM
Specifications	Products conform to DEWA / ADWEA / SEWA / FEWA / KAHARMAA - QATAR/ OMAN / AFRICA
International Standards	IEC 61330 / IEC 60076 / BS 171 / NEN 2761 / ANSI C57 Series / IEC 60439 / BS 5486

## Description

Here, at ETS, we manufacture a wide range of Package Substations which primarily comprise of the Transformer, high voltage Ring Main Unit and low voltage Feeder Pillar. The entire assembly is mounted on a common base to facilitate lifting and hauling as an integral unit. The transformer terminations have flanges, which match the corresponding ones on the switchgear side. The interconnection between the high voltage side of the transformer and the high voltage Ring Main Unit is done by means of either an oil filled trunking or with plug-in elbow connectors with cable. The low voltage Feeder Pillar is directly mounted on the corresponding flange of the transformer. Depending on customers' requirements, we can provide Ring Main Unit and Feeder Pillar on opposite sides or on one side of the Transformer. Furthermore, if required by the customer, we can also supply appropriate housing for the substation unit. Typically, the material used for the housing can either be GRP, Sheet Steel, ALUZINC, or Aluminium. The housing, whenever provided, is also fitted with the necessary ventilators and has suitable doors for easy access to the units. The substations are completely weather proof and are suitable for indoor or outdoor use.



## Quality Assurance

The Integrated Management Systems (IMS) of the organization meet the requirements of ISO-9001, ISO-14001, OHSAS-18001. Periodically, these are audited by LRQA, an authorized certifying body of ISO, to ensure that the systems and processes conform to established norms. Quality checks on the processes and procedures are conducted as per the established IMS.

The organization's belief in continuous improvement is driven by its dedication to having an effective IMS. Furthermore, inputs from Quality Audit, Analysis of Data, Corrective & Preventive Actions, Management Reviews etc, continue to fuel the Company's efforts to refine the IMS.

## Routine & Type Tests

We are proud to announce that our testing facility is now accredited by the GCC Accreditation Center (GAC) and is in compliance with the requirements of the International Standard ISO/IEC 17025:2005. In order to further enhance the organization's efforts towards ensuring quality, it has significantly invested in the construction of a well-equipped and modern in-house testing facility. The Test Laboratory is fully equipped for conducting all the routine tests on transformers up to 40 MVA, 33 kV class, switchgear and package substations. The test equipment is periodically calibrated to generate precise and accurate test results. In addition to the routine tests, the type tests as per IEC-60076 comprising the Temperature Rise Test and the Impulse Voltage Withstand Test are conducted in-house. Furthermore, special tests such as Noise Level, Partial Discharge and Pressure Cycling Tests can also be conducted at the ETS testing facility.

## Product Specifications

System Voltage	Up to 17kV
Transformer Rating	Transformer Rating to be specified by the customer (From 250kVA to 1600 kVA)
LV Feeder Pillar	To be specified by the customer
HV Ring Main Unit	Oil Type / SF6 with Fuses / SF6 with Circuit Breaker
Type of Cooling	ONAN
Housing	GRP / ALUZINC / SHEET STEEL / ALUMINIUM
Specifications	Products conform to DEWA / ADWEA / SEWA / FEWA / Kahramaa-Qatar specifications / Oman / Africa
International Standards	IEC 61330 / IEC 60076 / BS 171 / NEN 2761 / ANSI C57 Series / IEC 60439 / BS 5486



Abdulla Al Madani Trading Co.  
P.O. Box: 2019, Abu Dhabi , UAE  
Tel: +971 2 6332285  
Fax: +971 2 6345880  
e-mail: aamtc@eim.ae





شركة عبد الله المدني للتجارة  
Abdulla Al Madani Trading Co.



الإمارات للمحولات و المفاتيح الكهربائية المحدودة  
Emirates Transformer & Switchgear Limited

## Switchgears



### LV Switchgear (Low Voltage Switchgear)

AAMTC offers a complete range of low voltage switchgear for secondary distribution developed from customer requirements.

#### Main & Sub Main Panels

Ratings	Up to 4000 Amps
Incomers	ACB, MCCB, Load Break Switch with or without metering.
Busbars	H.C.H.D. Tinned Copper
Outgoings	ACB, MCCBs, Fuse Switches, Fuses
Enclosure	IP55/54, Sheet Steel Freestanding / Wall mounting Epoxy Powder coated to Light Grey color RAL 7032

#### Motor Control Centers

Ratings	Up to 4000 Amps
Incomers	ACB, MCCB, Load Break Switch
Busbars	H.C.H.D. Tinned Copper
Outgoings	Soft starters, Y-D, DOL , Autotransformer starters with fuses, MCB, MCCB, as backup protection
Enclosure	Freestanding / Wall mounting, IP55/54, Sheet Steel/GRP





### Feeder Pillars

Ratings	Up to 4000 Amps
Incomers	ACB, MCCB, Load Break Switch
Busbars	H.C.H.D. Tinned Copper
Outgoings	Soft starters, Y-D, DOL, Autotransformer starters with fuses, MCB, MCCB, as backup protection
Fuselinks	DIN type size 00 to size 03, J type 82mm, 92mm centers
Enclosure	Freestanding/Wall mounting, IP5554/, Sheet Steel/GRP

### Street Light Panels

Ratings	Up to 600 Amps
Incomers	MCCB, Isolator, Fuse Switch
Outgoings	MCCB, MCB, Fusebases
Control	Common TP Contractor or individual Contractor controlled by either photocell, 24 hr. time-switch or solar dial time-switch
Enclosure	IP55 Outdoor Type, Sheet Steel, Aluminum, GRP

### Control Panels

Ratings	Up to 600 Amps
Incomers	MCCB, Isolator, Fuse Switch
Outgoings	MCCB, MCB, Fusebases
Control	Common TP Contractor or individual Contractor controlled by either photocell, 24 hr. time-switch or solar dial time-switch
Enclosure	IP55 Outdoor Type, Sheet Steel, Aluminum, GRP

### Metering Cabinets

Ratings	Direct type meters up to 120A, TP CT meters from 200A onwards
Types	With or without MCCB, ELCB, Switchfuse, Cut-outs
Enclosure	IP55, Sheet Steel, GRP with Polycarbonate smash proof meter viewing window sealed to IP55

Ratings	10kVAr to 1200kVAr in multi steps
Types	With Automatic microprocessor based controller and with or without
Enclosure	Harmonic filtering chokes Sheet steel, integral with main panel or freestanding



Abdulla Al Madani Trading Co.  
P.O. Box: 2019, Abu Dhabi, UAE  
Tel: +971 2 6332285  
Fax: +971 2 6345880  
e-mail: aamtc@eim.ae





## Hawker Siddeley Switchgear

A market leader in 11kV switchgear, the Eclipse is designed to provide a lifetime of unrivalled service, bringing together one of the most advanced operating mechanisms available on the market today – the award winning magnetic actuator technology – with vacuum interruption and the simplicity of air insulation in a compact, fixed pattern design. Appreciated throughout the distribution network and across every business sector, the Eclipse currently holds a dominant market position for indoor 11kV switchgear. The Eclipse is also now available as a pre-engineered solution in ratings up to 25kA, 2000A. Alternatively, it can be fully engineered to meet exact customers needs.

- » Superior, proven Fit & Forget technology with minimal maintenance
- » The fixed pattern design had the simplicity of air insulation and, with the low parts count (the total parts count has been reduced by a factor of x20 and the number of moving parts by a factor of x50), is more compact (500mm wide) than equivalent rated GIS equipment
- » Environmentally friendly vacuum interrupters
- » Internal Arc containment
- » Superior operator safety with a fully interlocked design, animated front panel mimic and a front access cable test facility, ensuring secure but simple operation
- » Voltage Presence Indication System (VPIS) is fitted as standard to all panels (circuit)
- » Reliable control – supplied with an integral control module, providing indication, trip circuit supervision and self-diagnostics
- » Customers choice of protection

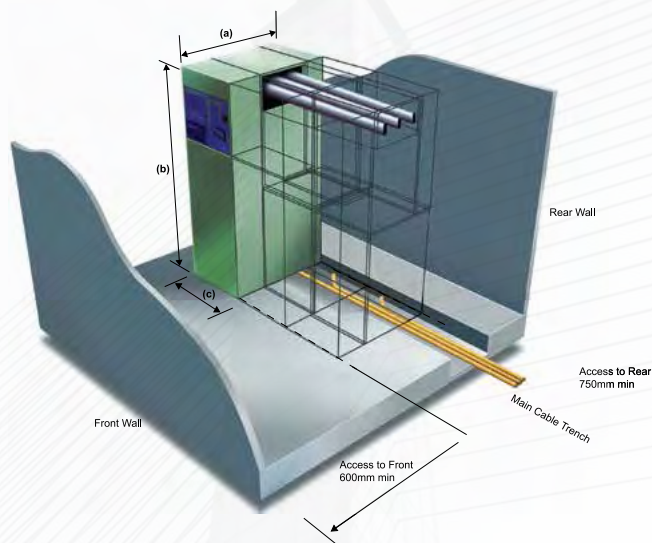
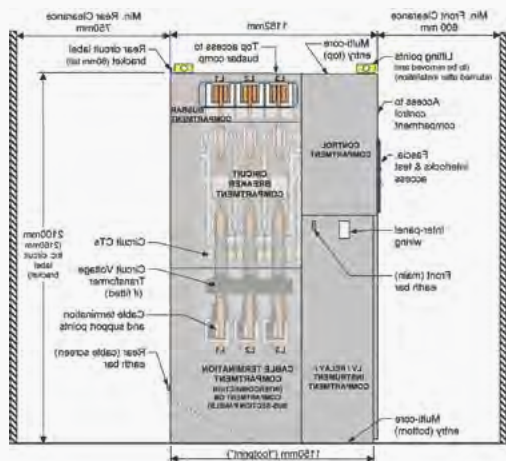
### Ratings

Rated Normal Current	630/1250/2000A
Rated Voltage	12 KV
Rated Frequency	50 HZ
Rated BIL	75/95 KV PK
Rated power Frequency Withstand	28/38 KV 1min
Rated Short-Time Withstand Current	20/25 kArms 3secs
Rated Peak Making Current	20/62.5 KA
Internal Arc Compliance	25 KA 1 sec
Rated Short Circuit Breaking Current	20/25KA
Degree of Protection	IP4X
Single Capacitor Bank breaking Current	400A
Circuit Breaker Classification	E2, S2, C2
Auxiliary Operating Supply	125/110/48/30V DC
Busbars Normal Current	1250, 2000A
Typical Weight	500 - 650KG
Ambient Air Temperature	-5°C to +40°C
Relative Humidity	<95%
Altitude	<1000m

### Standards

IEC 62271-200, IEC 62271-100, IEC 62271-102, IEC 62271-1, ENA TS 41-36  
Quality Assurance Certified and accredited too ISO 9001 by AFAQ-EAQA





### Eclipse Engineering Detail

- » Sleeved busbars constructed from hard drawn, high conductivity copper, and vermin proof covered joints, with normal current ratings up to 2000A. The busbar arrangement permits future expansion, at either end of the switchboard
- » Fully interlocked, manually operated 3-position disconnecter including circuit earth and front panel cable test access. The disconnecter can be secured and padlocked in all three positions: 'on', 'off' and 'earth on/ test', with its status indicated by animated front panel mimics
- » A single moulding supports the three phase vacuum interrupter assembly, magnetic actuator mechanism and one-piece drive beam
- » The patented single coil magnetic actuator mechanism is based on a solenoid plunger, held in the tripped or closed position by permanent magnets
- » Three phase cast resin voltage transformer, with manually operated off-load disconnecter on the primary circuit
- » Generous CT accommodation enables complex protection schemes to be catered for in a single panel, whilst still allowing for a metering provision. The CT designs are rated in keeping with the short time withstand level of the equipment and comply with IEC 60044-1

### Dimensions

All dimensions in mm

- » Dimensions for a standard Eclipse feeder/incomer panel  
(A) 1162 (B) 2165 (C) 500
- » Dimensions for a standard Bus-section panel (A) 1162 (B) 2165 (C) 1000
- » Dimensions for a Busbar earthing switch (C) 325
- » Dimensions for a single panel with Busbar VT (B) 2500
- » Dimensions for top entry cable One cable per phase - (A) 1482  
Three cables per phase - (A) 1812



Abdulla Al Madani Trading Co.  
P.O. Box: 2019, Abu Dhabi , UAE  
Tel: +971 2 6332285  
Fax: +971 2 6345880  
e-mail: aamtc@eim.ae





شركة عبد الله المدني للتجارة  
Abdulla Al Madani Trading Co.

## The new age sustainable solution for Electrical Switching

TAMCO's VHIH Switchgear is based on decades of experience of catering to a wide variety of customer requirements ranging from cassette or truck mounted, single or double tier, single or double busbar, manual or motorised type of switchgears. This experience enables TAMCO to offer versatile, safe and end user friendly products. VHIH comprises PM class medium voltage switchgear assemblies up to 17.5kV and features a cubicle width of only 600mm for ratings up to 1600A and fault levels of 40kA for 3s. VHIH is robustly designed and built to perform even in the most adverse environments.

The switchgear is absolutely safe and designed to work in a wide range of applications including utility, industrial infrastructure and complies with the latest IEC standards.



**TAMCO™**

# TAMCO Switchgear

a Larsen & Toubro Group company



### MV Air Insulated VCB Switchgear (12kV/17.5kV/24kV/36kV)

12KV AIR-INSULATED SWITCHGEAR (AIS) WITH VACUUM CIRCUIT BREAKER (VCB)

Rated service voltage	12kV
Rated frequency	50/60 Hz
LV Feeder Pillar	To be specified by the customer
Rated power frequency withstand voltage	28/38kV
Rated impulse withstand voltage	75kV & 95kVp
Rated current of VCB	630~3150A
Maximum rating of busbars	3150A
Short time withstand current	up to 50kA 3 seconds Fully rated / fault-make integral earthing switch

#### Construction:

- » Single and double busbar options
- » Double-tier panel
- » Metal enclosed switchgear, fully compartmentalized
- » Closed-door circuit breaker operation option
- » Arc-proof construction
- » Horizontal isolation, horizontal drawout
- » Circuit Breaker – floor level withdrawal / mid-panel mounting options

### MV Gas insulated VCD Switchgear (36-40.5kV)

36-40.5kV GAS-INSULATED SWITCHGEAR (GIS) WITH VACUUM CIRCUIT BREAKER (VCB)

Rated service voltage	36 - 40kV
Rated power frequency withstand voltage	70~85kV
Rated impulse withstand voltage	170 - 185kVp
Rated current of VCB	1250~2500A
Maximum rating of busbars	2500A
Short time withstand current	up to 40kA 3 seconds Fully rated / fault-make integral earthing switch

#### Construction:

- » Single and double busbar options
- » Arc-proof construction
- » Totally sealed metal enclosed switchgear

#### Others:

- » Single and double busbar options
- » Arc-proof construction
- » Totally sealed metal enclosed switchgear





### Design for Safety

TAMCO regards safety as the most important consideration for switchgear design and operation and the following proven safety features have been built into VHIH:

- » 40kA IAC for 1 sec in 600mm width cubicle
- » For operational safety positive fail safe interlocks are incorporated for VCB, Earth Switch & VT operation
- » Metallic independent movement shutter with padlock option
- » Arc fault contained viewing window for viewing earthswitch main contacts prior to operation
- » Optional motorised remote racking in and out facility for VCB trucks.
- » Comprehensive pad-locking facilities
- » Mimic diagram and position indicators to guide operators

### Electrical Characteristics

12kV

17.5kV

Rated current	A	630/800/1250/1600/2000/3150/4200*	
Rated frequency	Hz	50 / 60	
Rated short time current	kA/3sec	25/31.5/40/50	25/31.5/40
Rated s. c. making current	kAp	62.5/79/100/125	62.5/79/100
Rated s.c.sym.breaking cur.	kA	25/31.5/40/50	25/31.5/40
Rated impulse voltage (1.2/50)	kVp	75	95
Rated A.C. 1 min pf voltage	kV-rms	28	38
Internal arc for 1 sec	kA	40/50	
Width		Up to 1600A - 600mm	
		Up to 2500A - 800mm	
		Up to 4200A - 1000mm	
Depth	mm	1570/1970/2170**	
Height	mm	2495**	

### VHIH Variants

- » Incomer & Feeder Panel
- » Bus Sectioniser
- » Bus Riser
- » Cassette or Floor Rolling VCB Bus VT & Line VT
- » Two Tier VT Panel
- » Swing-out or Trolley VT Metering Panels
- » Vacuum Contactor Panels Cable entry from top & bottom

### Features

- » Fully typed tested as per IEC62271-100/200/102 Compact dimensions
- » Generous air clearances for busbars
- » Safe and fail-safe positive interlocks
- » All operations behind closed door
- » Fault make type earthing switch available
- » Sliding door, easier locking
- » Optional motorised rack-in and rack-out
- » Fixed type, swing type and draw-out type VT options
- » Block type or ring type CT options available Generous cable termination height
- » Seismic Zone -V tested

### Customer Benefits

- » Space saving
- » Safe operation behind closed door
- » Ease of installation
- » Breaker movement inside cubicle is independent of floor surface condition
- » Extensible both sides
- » Minimum operator training required
- » Internal Arc Fault tested for 1 second for up to 40/50kA



Abdulla Al Madani Trading Co.  
P.O. Box: 2019, Abu Dhabi , UAE  
Tel: +971 2 6332285  
Fax: +971 2 6345880  
e-mail: aamtc@eim.ae

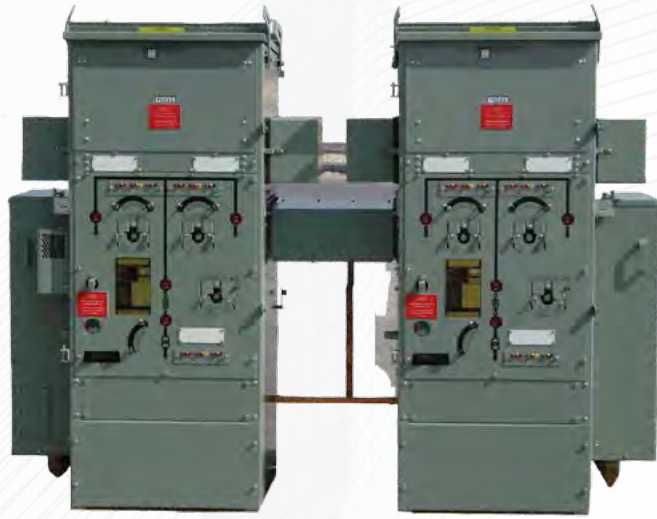




شركة عبد الله المدني للتجارة  
Abdulla Al Madani Trading Co.



## Lucy Switchgears



### MV Switchgear (Medium Voltage Switchgear)

AAMTC offers a complete range of medium switchgear for primary and secondary distribution developed from customer requirements.

### Lucy Switchgear

#### Automated Distribution solutions

- » Remote Terminal Unit
- » Scada
- » Earth Fault Indicator
- » Ring Switch Motor
- » Double Extensible Oil Switch [DEOS]
- » Extensible Oil Switch [EOS]

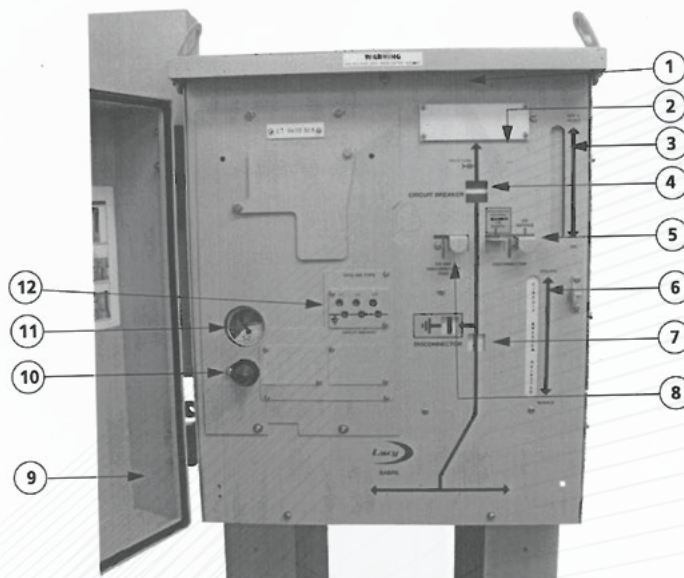
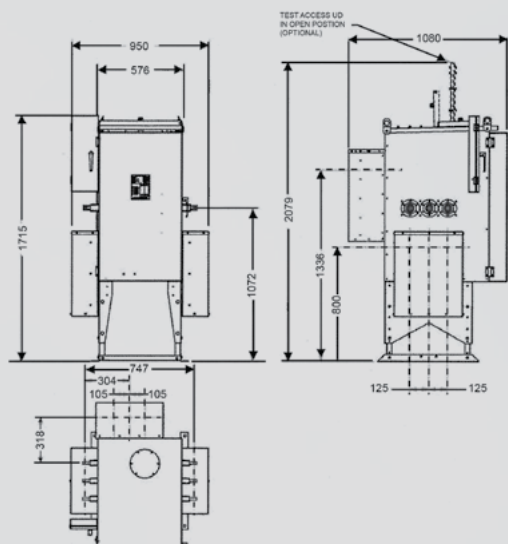
#### Switchgear Product Categories

- » Ground Mounted Secondary Switchgear
- » Switchgear Automation
- » Rural and Substation Disconnectors
- » Power Connectors
- » Low Voltage Distribution
- » Low Voltage Cut Outs

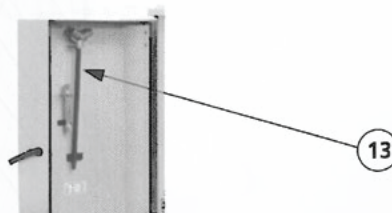


Lucy Switchgear provides switching and protection solutions for electrical distribution systems. Our technology is at the cutting edge of medium voltage switchgear design and innovation, specialising in both ground and pole mounted switchgear. Staying ahead of the competition with technical excellence and responsive after scale care, Lucy Switchgear has the capability to manufacture units for any location, climate or situation.





1. Fascia/Front Panel
2. Optional 'Pull to Trip' Knob & 'Tripped on Fault' indicator Blanks
3. Circuit Breaker/T-Off Operation Slot
4. Circuit Breaker/T-Off Indicator
5. Circuit Breaker/T-Off Selector
6. Disconnecter Operation Slot
7. Disconnecter Indicator (Service/Earth)
8. Disconnecter Padlock Flap
9. Door
10. SF6 Top up Valve - Hansen coupling
11. Pressure Indicator
12. Optional VPIS plate for CB/T-Off



### Remote terminal unit (RTU)

The RTU is an advanced, highly flexible and ultra-efficient solution for remote operation and control of electrical distribution networks. Enclosed in a stainless steel casing for maximum protection, the Gemini RTU is designed to operate in the most demanding environments. The key features of the Gemini range are:

- » Embedded auto change over and auto sectionalizing functions
- » Control and monitoring of up to 4 motorized functions (switches or circuit breakers)
- » Inbuilt earth and fault passage indicators

In addition to the above features, remotely monitored and controlled switchgear provides significant benefits to customers such as:

- » Reduced time in diagnosing system anomalies as well as locating and isolating faulty sections of the network
- » Faster response time and quick network reconfiguration
- » Optimization of asset management through the implementation of customized automation schemes
- » Reduced operational cost associated with routine network switching
- » Increased operator safety



Abdulla Al Madani Trading Co.  
P.O. Box: 2019, Abu Dhabi , UAE  
Tel: +971 2 6332285  
Fax: +971 2 6345880  
e-mail: aamtc@eim.ae





شركة عبد الله المدني للتجارة  
Abdulla Al Madani Trading Co.



## High Performance Electric Resistance Butt Welders

for wire • rod • cable



### Value-Added Welding Solutions for 85+ years

- Leading manufacturer of heavy-duty Micro-Weld electric resistance butt and flash welders since 1928
- Our welders are helping customers process wire, rod and cable in the most efficient manner worldwide
- Unique robust design allows for simplicity of operation, repeatability and reliability for years to come
- 50 models to choose from, custom design capabilities, and a wide variety of accessories



### Designed and Manufactured to Meet World-class Quality Standards

- Experienced technical professionals manage every phase of production
- In-house foundry to produce castings
- State-of-the-art manufacturing equipment in our factory
- We build our own uniquely designed heavy-duty transformers

### Micro-Weld Special Services Give Customers a Competitive Edge

- Sample weld evaluation
- Optimize customer's welding processes
- On-site service and training
- Customized PM services

### Genuine Micro-Weld Parts

- Knowledgeable sales staff to address your parts needs
- Rapid response
- Customized stocking program





#### Butt Welders for Steel, Stainless and Alloy Wire and Rod

- **J Series (5 Models):** 0.5mm to 12.70mm diameter
- **Model THD:** 3mm to 12.70mm diameter
- **Model HX:** 3mm to 19mm diameter steel rods
- **ADX-1 Heavy-Duty Welder:** 6mm to 25.5mm diameter steel rods
- **MD Series Heavy-Duty Flash Welders (4 Models) :** 6mm to 44.5mm diameter steel rods

#### Butt Welders for Copper and Aluminium Wire, Rod and Cable

- **J Series (5 Models):** 0.8mm to 12.7mm diameter
- **AD Series Weld Large Diameter Wire/Cable:** Sleeveless welding of stranded conductors 27mm<sup>2</sup> to 2500mm<sup>2</sup> Solid conductors from 4.75mm to 45mm+
- **Ceramic Fusion Butt Welders for Stranded Conductors:**

GPM Models (4): 0.12mm<sup>2</sup> to 25mm<sup>2</sup>

Model HP-1: 10mm<sup>2</sup> to 150mm<sup>2</sup>

Welders use ceramic sleeves for burr-free welding

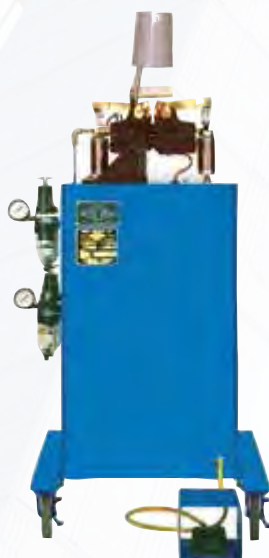
#### Fine Wire Butt Welders

**Models available for a wide range of sizes:**

- Copper: From .177mm to 1.270mm diameter
- Steel: From .127mm to 1.574mm Weld very thin wire

#### Other Welders Available

- Flat Strip Butt Welders
- Ring Welders
- Steel Tire Cord Welders
- Silver Solder Brazier
- Electro-Cut Units for Cutting and Fusing Steel Cable & Rope



Abdulla Al Madani Trading Co.  
P.O. Box: 2019, Abu Dhabi, UAE  
Tel: +971 2 6332285  
Fax: +971 2 6345880  
e-mail: aamtc@eim.ae



Abdulla Al Madani Trading Co.  
P.O.Box: 2019, Abu Dhabi , UAE  
Tel: +971 2 6332285  
Fax: +971 2 6345880  
e-mail: [aamtc@eim.ae](mailto:aamtc@eim.ae)

